

Exeter University Shakespeare Company Presents  
William Shakespeare's

# A Midsummer Night's Dream



14-16th NOV

Frank Oliver, Kay House  
Exeter, EX4 4RE

Directed by  
Lachlan Evans

Produced by  
Jovie Chan



# DIRECTOR'S NOTE

I read *Midsummer* for the first time while on holiday this summer in preparation for studying it in term 1, and completely fell in love with the world of the play immediately.

I particularly loved the forest as a sensual space in which social boundaries dissolved, and characters entered a vibrant, magical realm which led them into a drug-fuelled exploration their own emotionally charged hedonistic desires. It struck me as a very cinematic story which contained some surprising parallels to the modern experience of being a young adult at university.

One of the most exciting aspects of directing the play was creating a soundscape for the forest, as artists like Ichiko Aoba jumped out to me as perfectly fitted for this exact atmosphere. This was my first dive into directing theatre, and though it was a complete whirlwind of experiences, I couldn't be more thankful for just how fun it was to create something with such an amazing team of dazzlingly creative and talented people. I really admire everything ShakeCo does to showcase the plays of Shakespeare—especially their respect for the beauty and poetry of his original writing—and I am so pleased that I was able to be a part of it

Lachlan Evans  
Director





# ASSISTANT DIRECTOR'S NOTE

A Midsummer Night's Dream is not only one of Shakespeare's most famous plays, but most certainly a fan favourite! I have always been drawn to its charm and wit alongside its magic and romance. It's also a play which holds no bounds of interpretation and so I have been honoured to take part in ShakeCo's very own creation of it! Watching the beauty of it come alive has been spectacular and I'm so excited for it to be shared!

Phoebe Francis  
Assistant Director





# A NOTE FROM OUR PRODUCERS

'A Midsummer Night's Dream' really has been a dream to produce. It has been a privilege working alongside such a talented group of people to bring this project to life, and I couldn't have asked for a better company. I was very drawn to Lachlan's vision of the show, and I have been so excited to watch this project blossom. Working alongside Lachlan and Phoebe has been such an honour, and their talent is showcased through every corner of their direction.

With previously producing a Jawbreaker show 'All the Time in the World', this has been my first larger-scale producing role, and I am so lucky that I have had a wonderful production team supporting me. This team has been working ridiculously hard behind the scenes for the past few weeks, and I could not be prouder of them. I would especially like to thank my assistant producer, Hannah, who has been there for me every step of the way, and as always has been such a delight to work with (the stage manager and ASM to producer and assistant producer trajectory is real). I would also like to thank our production supervisor, Rosie, for the huge support throughout, and always offering a different perspective to Hannah and I.

This show has made me so many memories, from long days in the workshop to visiting rehearsals and doing some Just Dance with the cast, and I will treasure these moments forever and ever.

**Jovie Chan**  
Producer

Being a part of this production has been an amazing experience. Creating a show is always fun, but this show really lends itself to creativity. The themes of magic, 'Euphoria' and foresty allowed a lot of creative freedom while also making it clear what the directors' vision was. I loved working out how various elements of the production needed to work and blend together to achieve the vision, and discussing ideas with the prod team and seeing the whole show come together. Bringing Lachlan and Phoebe's vision to life and working with them both has been so much fun.

I cannot praise the incredible production team enough for all the time and effort they've each dedicated to this show. But also the wonderful cast giving up their time for rehearsals and playing around with comedic moments, especially since the language can be hard to grasp this really elevated the scenes and made it fun to watch even if you don't understand the words. Every single member of the company has been a joy to work with and I'm so proud of the show we've created.

Lastly, I want to thank my incredible producer, Jovie. Working with Jovie again has been wonderful and watching her produce a show, while also being her helping hand has been super exciting. While some elements have been tricky to figure out, we've had a lot of fun and it's definitely all been worth it. I'm so excited for people to see this show and all the hard work that's been put into it.

Hannah Wycherley  
Assistant Producer



# CREATIVES

DIRECTOR



Lachlan Evans

ASST. DIRECTOR



Phoebe Francis

PRODUCER



Jovie Chan

ASST. PRODUCER



Hannah Wycherley

# CAST

OBERON



Aaron Holmes

TITANIA



Isabel Horsfield

PUCK



Sophie Campbell

HERMIA



Eleanor Brazier

LYSANDER



Ben Lewin

DEMETRIUS



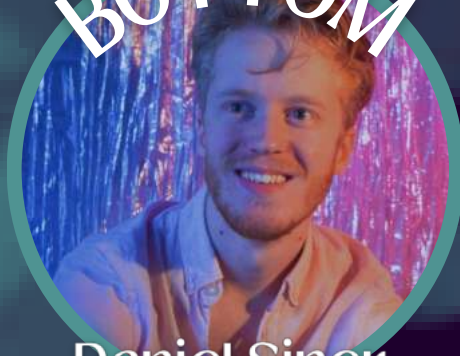
Scarlett Gladstone

HELENA



Francesca  
Galla-Taylor

BOTTOM



Daniel Siner

QUINCE



Robin Cartledge

FLUTE



Harriet Stewart

SNOUT



Dylan Williams

STARVELING



Max Walters

# PRODUCTION

STAGE MANAGER



Lily Vinall

ASST. STAGE



Sophie Cox

ASST. STAGE



Jasmine Perkins

COSTUME



Miranda Windridge

MARKETING



Ella Morgans

FUNDRAISING



Claire Stuart

PHOTOGRAPHER



Caterina Donelli

LIGHTING



Talia Bunting

SOUND



Dexter Meleisea

TECH ASST.



Gethin Hudson



# SYNOPSIS

After refusing to marry noblewoman Demetrius, whom she doesn't love, Hermia's life is threatened by her own father. She and her lover, Lysander, resolve to run away to the forest and elope. They tell Hermia's childhood best friend, Helena, of their plans and make their escape, but they soon lose their way.

Helena tells Demetrius of Hermia and Lysander's plan, and Demetrius follows the lovers into the woods. Helena follows Demetrius in the hope she will give up on Hermia and choose her instead.

Meanwhile, king and queen of the fairies, Oberon and Titania, quarrel. Oberon sets in motion a plan to squeeze the juice of a magic flower into his wife's eyes, which will make her fall in love with the next being she sees.

Oberon suddenly spots Helena chasing Demetrius, and, believing he knows what it is like for Helena to love someone with a cold heart, tells Puck to also squeeze the juice in Demetrius' eyes, and make them fall in love. However, Puck mistakenly drugs Lysander instead, and Helena, who finds and wakes him, becomes the object of his desire.

While Puck is on his way back to Oberon, he spots a group of actors rehearsing a play. As a prank, Puck transforms the head of the lead player, Nick Bottom, into a donkey! Oblivious to his metamorphoses, he carries on with the play. Horrified, his cast mates run away and leave him to sing in the wilderness alone. This awakens Titania, who instantly falls in love with the donkey-headed Bottom and begins to pamper him as a king. Both Puck and Oberon find this prank very amusing.

As they laugh, Demetrius runs past, chasing a furious Hermia. Puck and Oberon follow her to fix their mistake. They drop the juice into Demetrius' eyes, so that she will fall in love with Helena when she wakes.

Now being pursued by both Lysander and Demetrius, Helena believes she is being pranked and becomes furious with Hermia. Hermia, devastated by Lysander's sudden rejection, reacts just as angrily. A chaotic argument ensues between the four lovers, until Oberon and Puck use magic to send them into a deep sleep.

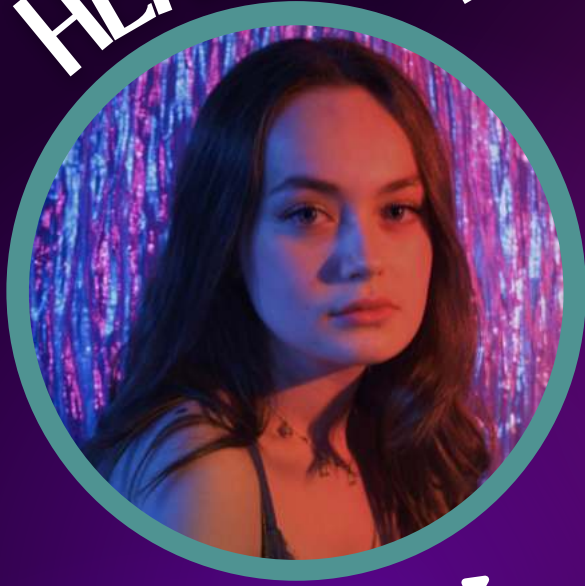
Titania and Bottom enter and decide to have a rest together on the ferns. Oberon suddenly becomes very sad and decides to end the prank, wanting his wife back. He orders Puck to break the spell with Bottom and makes amends with Titania.

The lovers wake: Lysander loves Hermia, and Demetrius love Helena. With all the conflict forgotten, they say their fond goodbyes part ways. As for the bemused Bottom, he awakes some time later and stumbles back to Athens too, musing over the strange dream in which he had the head of a donkey and fell in love with the fairy queen of the forest, to perform in his play.



# LOVERS DIAGRAM

HERMIA



LYSANDER



HELENA



DEMETRIUS



→ = In love with





# COSTUME

In 'A Midsummer Night's Dream,' the costumes aim to combine Shakespeare's classical themes with modern styles. We made an effort to collect and make all costumes sustainably, using charity shops, old materials, and the actors' own clothes as the main sources.

The Fairy Titania's dress had to be very regal and whimsical and allow her movements to float around the stage. I made it from a floral, translucent material I already owned and attached lace to the sleeves and a belt to complete the costume. For Oberon, I found a black glittery tank top and sewed on leaves and vines to match his crown. Puck's dress also needed to move well, I happened to have an old green dress that I didn't use anymore and made small flowers and leaves to sew on. The three sets of wings relate to their characters and are made from wire and painted tights.

For the Lovers of the group (Demetrius, Lysander, Hermia, and Helena) we used inspiration from the HBO series 'Euphoria'. The Modern, nightclub, dreamy feel matched really well with the 4 characters. Most of the outfits were the cast's own.

The group of actors directed by Quince all wear eccentric, vintage fashion, with the occasional donkey head! I found some of the clothes from charity shops and the rest were provided by the cast.

## Miranda Windridge Costume

# STAGE

When creating the stage design for this play, the stage and production teams prioritised sustainability. This meant that we got the opportunity to use materials such as cardboard, wire and scrap fabrics in interesting and innovative ways, and we think that this contributed to the cohesive design of the production as a whole by giving it a really natural look. We hope you enjoy the show and our take on its design!

Lily Vinall  
Stage Manager

# COMMITTEE

CO-PRESIDENT

Ellie Baker

CO-PRESIDENT

Fern Boston

VICE PRESIDENT

Scarlett Gladstone

TREASURER

Lottie Walker

WELFARE OFFICER

Sam Churchouse

PUBLICITY MANAGER

Lizzy Thistlewayte

PRODUCTION SUPERVISOR

Mia Zeppenfeldt

PRODUCTION SUPERVISOR

Rosie Jones