



# THE **anandamide** GUIDE

This is a guide to the different chocolates available on the website. Access the site here to place orders now, or continue reading to browse & shop the full selection:

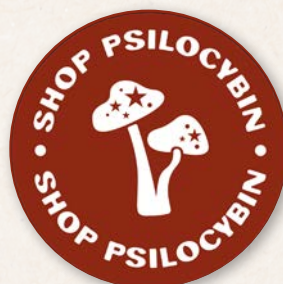
[ANANDAMIDE.US](https://www.anandamide.us)

# ABOUT OUR CHOCOLATES

**Our chocolate** is made using 100% organic nutrient dense low temperature processed plant ingredients. All of the cacao we use is wild harvested in the Northwest Ecuadorian jungle. Cacao has been used as a vehicle for high nutrition and medicine since its cultivation began in South America.

We follow in these footsteps, focused on medicinal value and nutrient density. With respect to the aspirations of European chocolate culture we strike pleasure on the palette and a balanced hint of sweetness. We hold these two traditional and different approaches to cacao as one and the same nature, to lead us forward into a new possibility of modern food.

**Already know what kind of chocolate you want?**



# SWEETEN THE DEAL: SAVE MORE WITH BULK ORDERING

Get more for your money with bulk-order savings when you buy 4 or more of any chocolate at a time.



SAVE UP TO  
**30% OFF**  
PER ORDER

## LOVE SOUND MIND? GET MORE OUT OF YOUR ORDER:

| QUANTITY | PRICE PER BAR | ORDER COST                      | SAVINGS      |
|----------|---------------|---------------------------------|--------------|
| 1        | \$25          | \$25                            | \$0          |
| 4        | \$22.5        | <b>\$90</b> <del>\$100</del>    | <b>\$10</b>  |
| 8        | \$20          | <b>\$160</b> <del>\$200</del>   | <b>\$40</b>  |
| 16       | \$18.75       | <b>\$300</b> <del>\$400</del>   | <b>\$100</b> |
| 32       | \$17.2        | <b>\$550</b> <del>\$800</del>   | <b>\$250</b> |
| 64       | \$15.6        | <b>\$1000</b> <del>\$1600</del> | <b>\$600</b> |

Buy in bulk for a similar discount on all other chocolates.

[→ SHOP @SOUND MIND](#)



# PSILOCYBIN

## → SOUND MIND

### 1.2g Psilocybin

Dark Chocolate, Reishi, Chaga, Lion's Mane, Cordyceps, Shiitake, Maitake

## → CORAZON

### 1.0g Psilocybin

Dark Chocolate, Kratom, Coca, Lion's Mane, Cordyceps

## → CORAZON EXTRA

### 1.0g Psilocybin

Dark Chocolate, Kratom, Coca, San Pedro Extract Resin, Lion's Mane, Cordyceps

## → SPIRIT POTION P.E.

### 1.8g Albino Penis Envy Psilocybin

Dark Chocolate, *Mushroom Heaven* (Lion's Mane, Shiitake, Maitake, Cordyceps, Reishi, Chaga)

## → SPIRIT POTION A.P.E.

### 1.8g Albino Penis Envy Psilocybin

Dark Chocolate, *Mushroom Heaven* (Lion's Mane, Shiitake, Maitake, Cordyceps, Reishi, Chaga)

## → SPIRIT POTION ENIGMA

### 1.8g Enigma Psilocybin

Dark Chocolate, *Mushroom Heaven* (Lion's Mane, Shiitake, Maitake, Cordyceps, Reishi, Chaga)



BUY  
NOW



## LOW / MEDIUM STRENGTH

MICRODOSE: 1/4 BAR

MACRODOSE: 1-2 BARS

### 1.2g Psilocybin

**Dark Chocolate, Reishi, Chaga, Lion's Mane, Cordyceps, Shiitake, Maitake**

Synergizes all of the mushrooms in the blend, with psilocybin as the captain. Reishi, Chaga, Lion's Mane, Cordyceps, Shiitake, Maitake all bring micro evolutionary forces to the body. This opens the potential of the psilocybin state into something new and different for functionality and integration. Each of the mushrooms focuses on different frequencies and energy centers of the nervous system, fine-tuning, detoxing, and upgrading at many levels, from emotional and psychospiritual to performance and athleticism. Sound Mind has creative, driving energy and upward moving evolutionary force. Be creative now about what's coming up. Move the energy forward and evolve in this moment.

# 02 CORAZON

BUY  
NOW



## LOW / MEDIUM STRENGTH

MICRODOSE: 1/4 BAR

MACRODOSE: 1-2 BARS

### 1.0g Psilocybin

**Dark Chocolate, Coca, Kratom, Lion's Mane, Cordyceps**

Corazon highlights the effect of Coca and Kratom while Psilocybin is in focus. Coca is traditionally used as a main nutrition source and energetic food essential for life in the Amazon rainforest, a holistic Andes Mountains herb. Kratom has both sedative and stimulant properties coming from its natural opioid content, also a widely used herb originating from Southeast Asia. Lion's Mane and Cordyceps have been included for energetic support to the nervous system and blood. The synergy of the blend focuses the high psilocybin energy down from the crown and into the heart. The effect is bubbly, light, fun, easy-going, socially compatible, and allows psilocybin to be a much softer character.

BUY  
NOW



### LOW / MEDIUM STRENGTH

MICRODOSE: 1/4 BAR

MACRODOSE: 1-2 BARS

### 1.0g Psilocybin

**Dark Chocolate, Kratom, Coca, San Pedro Extract Resin, Lion's Mane, Cordyceps**

This is the Corazon. (As above) with added San Pedro; Another heart warmer to penetrate your core and reveal wisdom. We have had an amazing journey getting to know San Pedro and we love to blend it with other psychedelics. The mescaline alkaloids present in San Pedro are noble phenethylamines, reminding us that we are surrounded by perfection and that our trust and sensitivity to that perfection is the wisdom that we need in each moment. Our reality is composed of energetic living details to be respected and considered. Listen closely, and also HAVE A GOOD TIME.

## 04 SPIRIT POTION P.E.

BUY  
NOW



### HIGH STRENGTH

MICRODOSE: 1/10 BAR

MACRODOSE: 1 BAR

### 1.8g Psilocybin

**Dark Chocolate, Mushroom Heaven (Lion's Mane, Shiitake, Maitake, Cordyceps, Reishi, Chaga)**

The Penis Envy psilocybin strain was discovered sometime in the early 1980s as pioneers of indoor psilocybin cultivation elaborated on genetic types. The original Penis Envy is erratic and elusive, difficult to cultivate, producing blob and abort structures, and elevated tryptamine concentration. In its most perfect form it was always stout and wide with a large cap to match. We see a variety of Penis Envy genetics today and bearing the original resemblance including complex and concentrated tryptamine profiles. We mix up the different Penis Envy genetics we see for each batch to keep the expression vibrant. Penis Envy has big energetic drive. Be prepared for big waves of energy pushing you to move. Consume with mindfulness about dosage; Potency is assured.

BUY  
NOW



### HIGH STRENGTH

MICRODOSE: 1/10 BAR

MACRODOSE: 1 BAR

### 1.8g Psilocybin

**Dark Chocolate, Mushroom Heaven  
(Lion's Mane, Shiitake, Maitake, Cordyceps,  
Reishi, Chaga)**

We see a variety of Penis Envy genetics today and bearing the original resemblance including complex and concentrated tryptamine profiles. Albino Penis Envy comes as a specific variant in the Penis Envy conversation. Each discovery in the genetic variations seems to bring about a different tryptamine profile of interest and this one seems to be getting a lot of attention by psilocybin enthusiasts. We have been told many times that this is a favorite. Be prepared for big waves of energy pushing you to move. Consume with mindfulness about dosage; Potency is assured.

## 04 SPIRIT POTION ENIGMA

BUY  
NOW



### HIGH STRENGTH

MICRODOSE: 1/10 BAR

MACRODOSE: 1 BAR

### 1.8g Psilocybin

**Dark Chocolate, Mushroom Heaven  
(Lion's Mane, Shiitake, Maitake, Cordyceps,  
Reishi, Chaga)**

Enigma comes to us with a name that suggests just what it is. Enigma is a strange mutation and phenomena in psilocybin culture. It does not have normal fruiting bodies like the rest of the psilocybin that we are used to seeing. Instead it grows with oyster mushroom like formations and a fruiting body that stays compact and cluster like. The tryptamine profile of Enigma is known to be twice as strong as any known psilocybin strain. For those looking for a deep and potent effect this is certainly one to reckon with. Consume with mindfulness about dosage; Potency is assured.

# ABOUT OUR CANNABIS

P6

[→ SHOP ALL CANNABIS](#)

**Our intention** is to explore and offer organic cannabis plant material translated into chocolate with purity and balance. We keep our processes simple so that the effects and flavor profiles we represent are expressive of the cannabis plant from which they originated.

We use **organic cannabis and solvent free extracts of cannabis** and infuse or stone grind them into the cacao fat at low temperatures under 200F. Low temperature cannabis processing preserves the original cannabinoid profile while allowing the cannabinoids to diffuse into the fat of the cacao, increasing absorption and bioavailability. Our process is in contrast to pervasive high temperature extraction standardly used for a majority of edibles on the market. High temperature extraction mutates cannabinoids and exacerbates unwanted traits like potent sedation.

**Our cannabis chocolates are NOT the super potent edibles that everyone has been talking about and traumatized by since cannabis' takeover of western culture.** Our top motivation is to make edible cannabis products that we ourselves want to eat. We love when edible cannabis encourages upgraded creativity and new perspective, while allowing functional and balanced behavior. Some cannabinoids have sedative characteristics while others have stimulant

characteristics (i.e. Sativa vs. Indica conversation) and we intend to embrace them all with balance.

**A key signature of our cannabis chocolates is the inclusion of medicinal mushrooms.** No, not psilocybin, but additions like Lion's Mane, Cordyceps, or Reishi Spore. The umami flavor and nootropic effects offer another complimentary seasoning to the conversation here; Lifted energy and upgraded brain functioning assist with integrating the creativity available in the cannabis experience.

Everybody's sensitivity is different so we suggest starting out slow. Most fans of our chocolate discover the right dosage for their own intentions and rarely report incapacitation, though there is an undeniable deliciousness to our chocolate that tempts any person to eat more. **Be careful. And have fun.**





# CANNABIS

## → WEST COAST HEMP

333mg Hemp Extract [CBD]  
Dark Chocolate, Sea Salt

## → SKINNY PABLO

161mg Flower & Hash [75% CBD, 25% THC]  
Dark Chocolate, Lion's Mane, Cordyceps,  
Syrian Rue, Sea Salt

## → LAVA CAKE

177mg Kief [THC]  
Dark Chocolate, Reishi Spore

## → FULL MELT

117mg Hash [THC]  
Dark Chocolate, Reishi Spore

## → FULL MELT 1ER CRU

117mg Hash [THC]  
Dark Chocolate, Reishi Spore

## → KAZ OILSLICK RAINBOW

117mg Rosin [THC]  
Dark Chocolate, Lion's Mane, Cordyceps

## → KAZ #1 SUMMER RAINBOW

117mg Rosin [THC]  
Dark Chocolate, Lion's Mane, Cordyceps

## → KAZ #2 SUMMER RAINBOW

117mg Rosin [THC]  
Dark Chocolate, Lion's Mane, Cordyceps

## → GAV OILSLICK RAINBOW

117mg Rosin [THC]  
Dark Chocolate, Lion's Mane, Cordyceps

## → STRAWBERRY BANANA ZOOKIES

117mg Hash [THC]  
*@heady\_mulch collab*  
Dark Chocolate, Reishi Spore

## → PANAMA RED

117mg Hash [THC]  
*@heady\_mulch collab*  
Dark Chocolate, Lion's Mane, Cordyceps

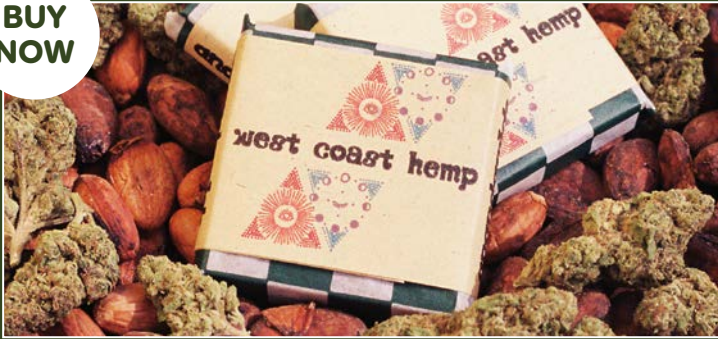


# CBD DOMINANT

[→ SHOP THC DOMINANT](#)

## 01 WEST COAST HEMP

BUY  
NOW



LOW / MEDIUM STRENGTH

### 333mg Hemp Extract [CBD] Dark Chocolate, Sea Salt

Signature 70% cacao dark chocolate blend, a dash of sea salt, and a single source full spectrum hemp extract from organic 'cherry wine' hemp grown in Bakersfield, California. 333mg hemp extract per bar, which is a large dosage for even CBD. This chocolate is fully psycho-tropic and offers a CBD clarity and just a dash of THC makes you very aware that you are stoned, while the uplifting quality and potency of the CBD content is undeniable.

# CBD + THC BLEND

[→ SHOP THC DOMINANT](#)

## 02 SKINNY PABLO

BUY  
NOW



LOW / MEDIUM STRENGTH

### 161mg Flower & Hash [75% CBD, 25% THC] Dark Chocolate, Lion's Mane, Cordyceps, Syrian Rue, Sea Salt

Stone Ground Cacao, Cannabis Flower, Syrian Rue, and Coffee come together for a rich and smooth mouthfeel and flavor. The CBD dominant cannabis, coffee, and a dash of THC-rich hash, deliver clarity and lift. The Syrian Rue promotes mood stability and a longer lasting effect overall. Lion's Mane and Cordyceps for strong Chi. @theskinnypablo provided the flowers. A memory of Long Beach as chocolate.

# THC DOMINANT CHOCOLATES

→ SHOP @HEADY.MULCH COLLAB

## 04 LAVA CAKE

BUY  
NOW



HIGH STRENGTH

**177mg Hash [THC]**

**Dark Chocolate, Reishi Spore**

Made using a single source single varietal Lava Cake kief, a popular strain for making hash that is of balance in flavor profile and effect. Earthy with a fruity cake frosting layer, leaning in the sativa zone. Reishi spore is added for strong Jing and Chi, brightness of spirit.

## 05 FULL MELT

BUY  
NOW



HIGH STRENGTH

**177mg Hash [THC]**

**Dark Chocolate, Reishi Spore**

Kaz Family first collaboration hash chocolate with us. Located in rural Oregon north of Mount Shasta, they process trim and flower from nearby organic outdoor growing operations. 30 different batches of hash were made in this small seasonal batch and separated originally and what is in this chocolate is a sum of all of these. Has a mint chocolate lift finishing with dark berry pie filling, intense in its effect, Full Melt no doubt. The strength is balanced for gradual eating of the bar. Reishi spore is added for strong Jing and Chi, brightness of spirit.

## 06 FULL MELT 1ER CRU

P10

BUY  
NOW



HIGH STRENGTH

**177mg Hash [THC]**

**Dark Chocolate, Reishi Spore**

Especially fruity and complex selections from the hash used in Full Melt, produced by the Kaz Family. Focused flavor with deep effects. Elaborates and elevates the Full Melt character to level worth keeping on its own. A cut above Full Melt. Premier Cru as the Burgundian would call it.

## 07 KAZ OIL SLICK RAINBOW

BUY  
NOW



HIGH STRENGTH

**117mg Rosin [THC]**

**Dark Chocolate, Lion's Mane, Cordyceps**

The lineage of the Kaz family is cannabis cultivation and extraction, so naturally making live rosin is a moonshine achievement done under special circumstances. Pressed under immense pressure, concentrated cannabinoids come seeping out of the hash for an even deeper clarity. The strength feels leveled up here due to the purity. Take this in parts. The waves are strong. Lion's Mane and Cordyceps helps keep the energy and clarity around to navigate this powerhouse of cannabinoid concentration.

## 08 KAZ #1 SUMMER RAINBOW

BUY  
NOW



HIGH STRENGTH

**117mg Rosin [THC]**

**Dark Chocolate, Lion's Mane, Cordyceps**

Outdoor-grown Cannabis is an annual, flowering once per year in Fall. In Spring and Summer, production is limited to washing and distilling the last harvest. Washing creates hash that is a sum of the previous season. The Kaz Family did 2 washes in 2024. #1 Summer Rainbow came first one, less distilled and refined, compared to #2. Full fruity flavors and a wide spectrum effect are the signatures here.

## 09 KAZ #2 SUMMER RAINBOW

P11

BUY  
NOW



HIGH STRENGTH

**117mg Rosin [THC]**

**Dark Chocolate, Lion's Mane, Cordyceps**

This is an off season hash production done by the master Kaz lineage, separated as #2 for being the more gooey putty like hash of the production. The waves are strong. Lion's Mane and Cordyceps helps keep the energy and clarity around to navigate this powerhouse of cannabinoid concentration.

## 10 GAV OIL SLICK RAINBOW

BUY  
NOW



HIGH STRENGTH

**177mg Rosin [THC]**

**Dark Chocolate, Lion's Mane, Cordyceps**

Cold CO2 extracted hash oil, concentrated cannabinoids with a darker molasses syrup taste. The strength is leveled up here with a type of clarity matched with strength. The refined cannabinoid profile allows the strength to stay in balance. Lion's Mane and Cordyceps helps keep the energy and clarity around to navigate this powerhouse of cannabinoid concentration.



# HEADY MULCH COLLABORATION SERIES

→ [@HEADY\\_MULCH](#)

This series of chocolates is a unique representation in the cannabis chocolate selection. The extracts used here were grown and processed by our friend [@heady\\_mulch](#) (check the instagram profile for beautiful documentation of the gardens). The varieties were kept separate to highlight the singular flavors and effects of each strain used. **The effects are calm and mellow in comparison to the rest of our classic recipes listed above; about 60% strength in comparison.**

## 09 STRAWBERRY BANANA ZOOKIES

BUY  
NOW



MEDIUM STRENGTH

177mg Hash [TCH]  
Dark Chocolate, Reishi Spore

As fun as it sounds. The varieties here are playful like desserts both flavor and effect.

## 10 PANAMA RED

BUY  
NOW



MEDIUM STRENGTH

177mg Hash [TCH]  
Dark Chocolate, Reishi Spore

Earthy fruits. This is a classic vintage strain from which many varieties we now know today were born.

# THANK YOU!

Referring loved ones is the greatest compliment. Thank you for sharing in the many ways that you will.

Follow along on instagram:  
[@ANANDAMIDE.US](https://www.instagram.com/ANANDAMIDE.US)



*anandamide*